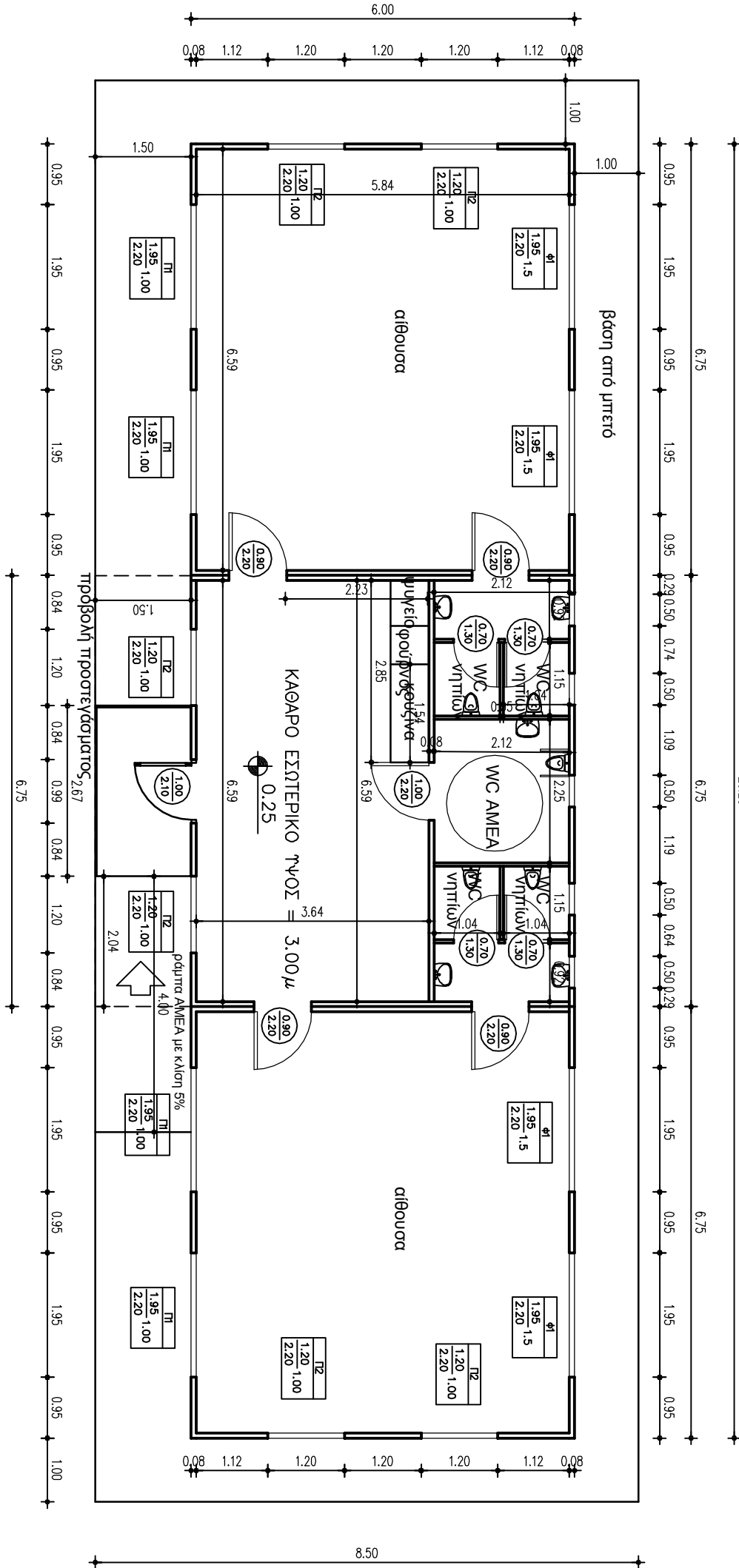
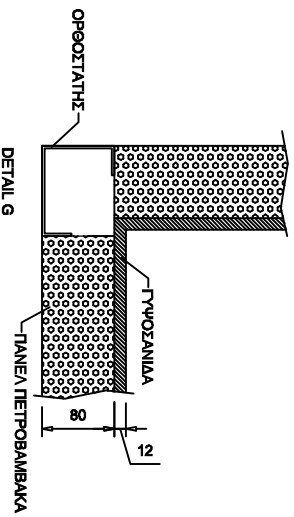
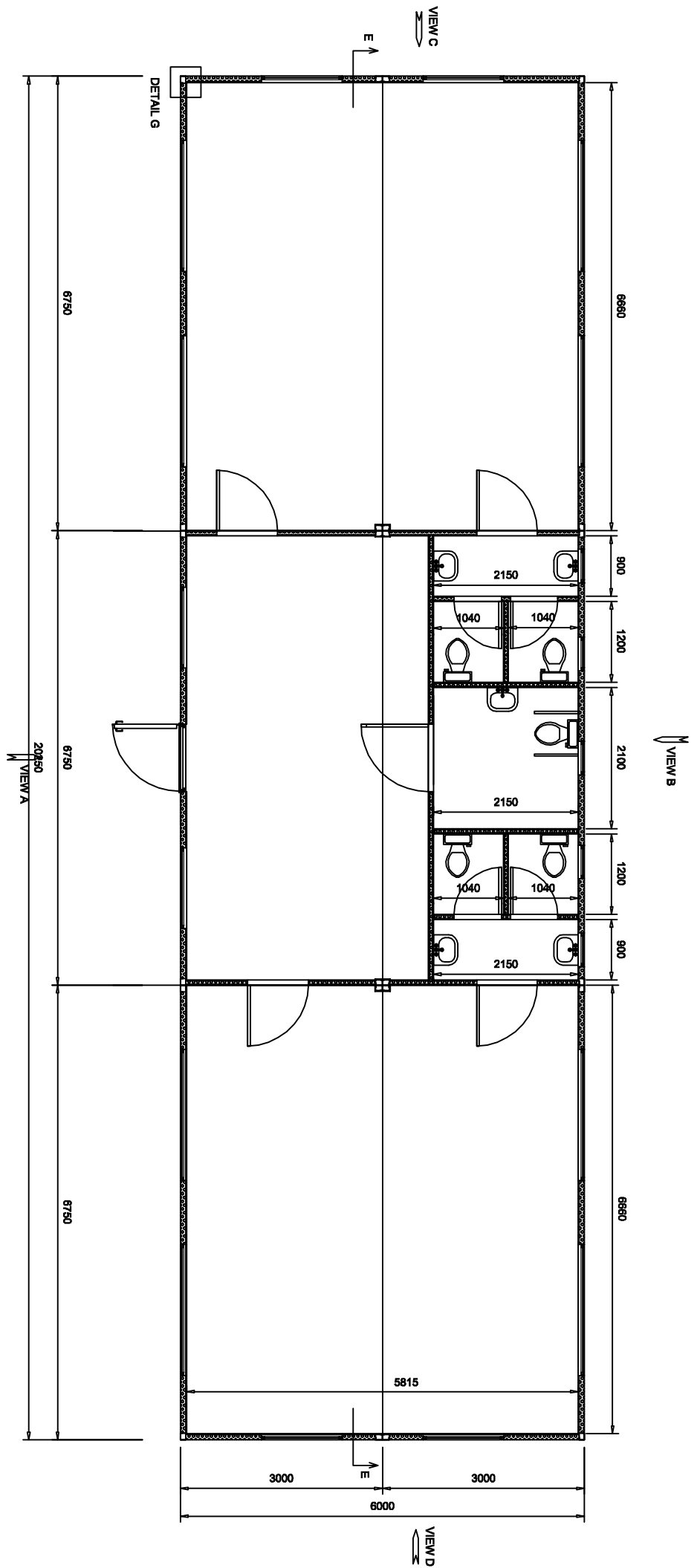


αύλειος χώρος

22.25

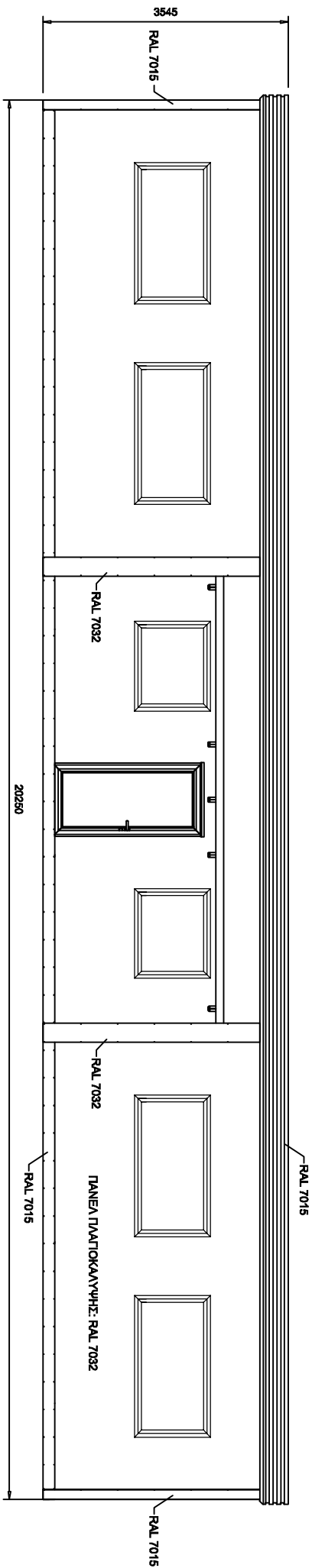


8.50

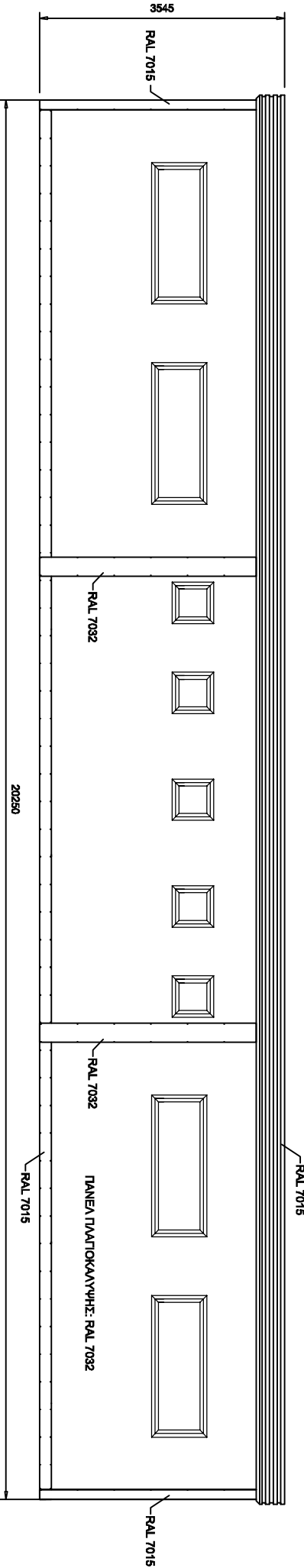


ΟΡΕΙΣ

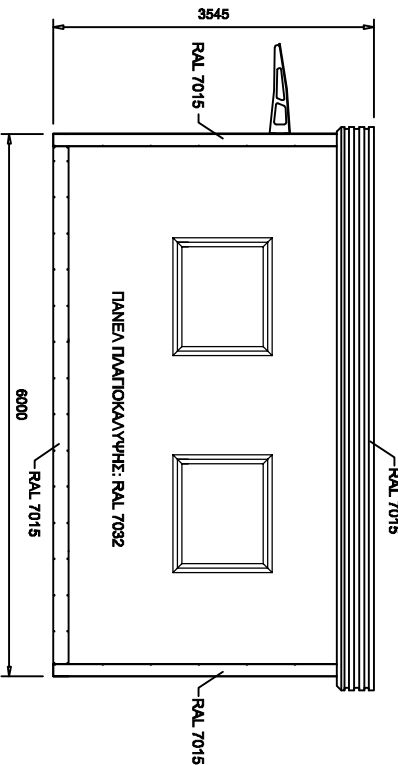
VIEW A



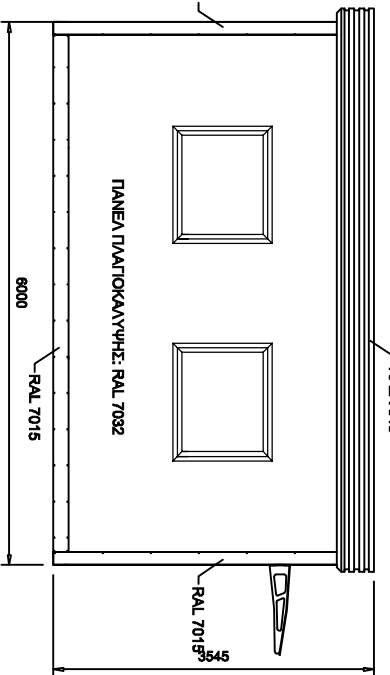
VIEW B

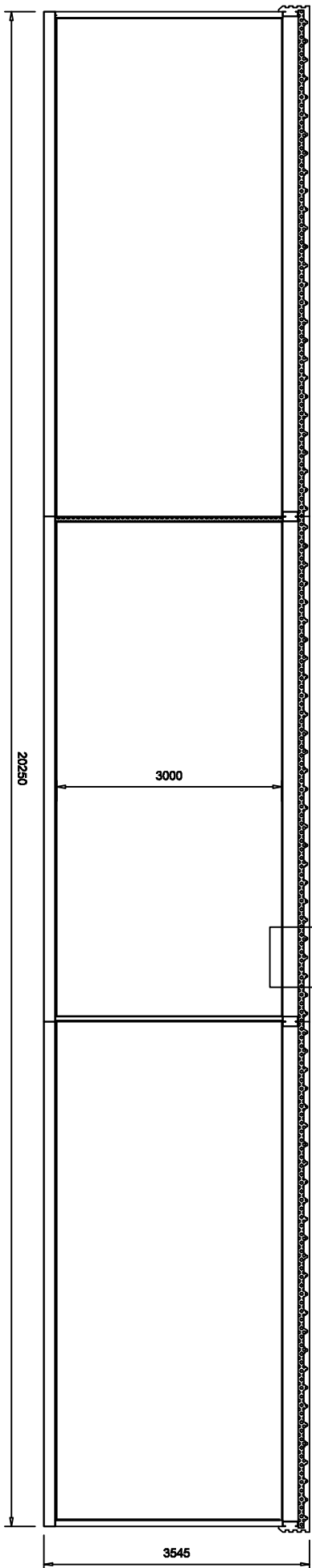


VIEW D



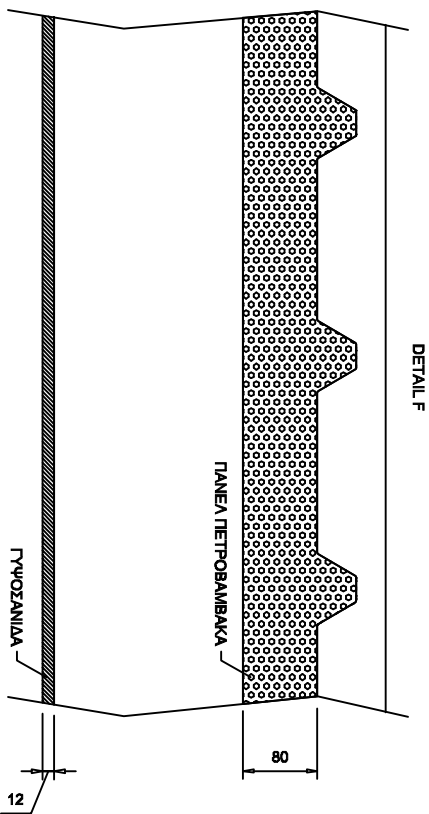
VIEW C





TOMH
SECTION E-E

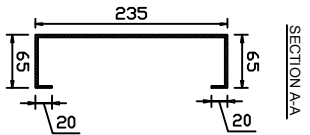
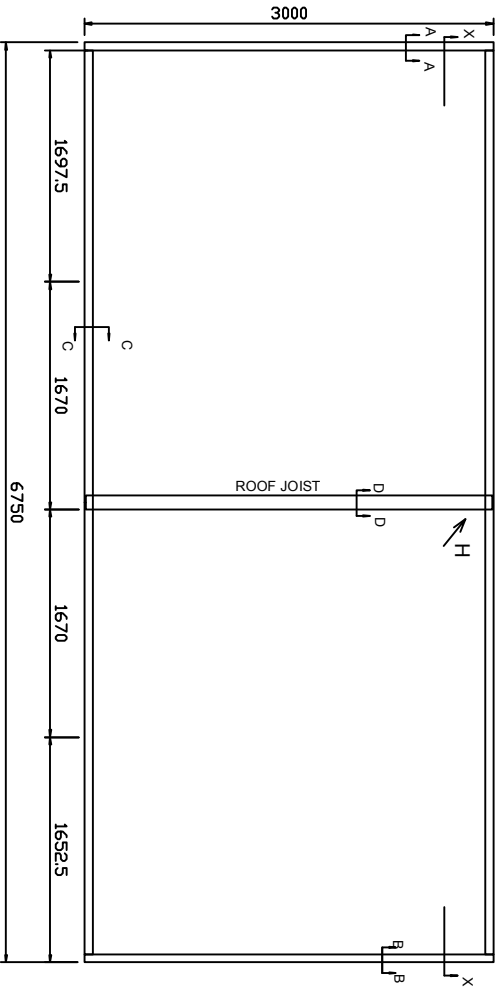
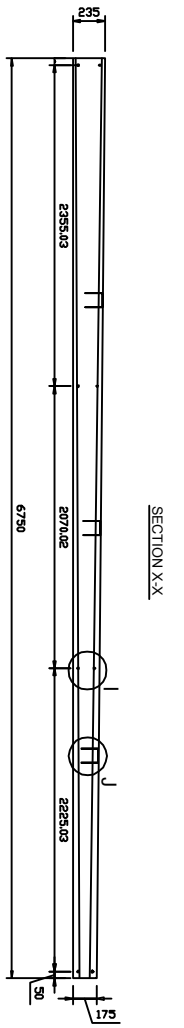
DETAIL F



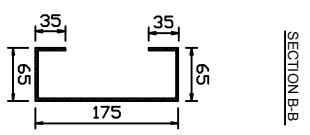
DETAIL F

ΠΑΝΕΛ ΠΕΤΡΟΒΑΒΑΚΑ

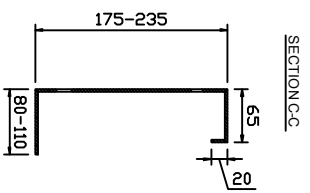
ΓΥΦΟΣΑΝΙΔΑ



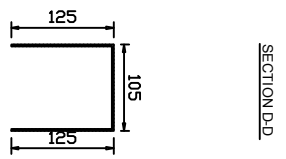
MATERIAL
PL 3mm GAL



MATERIAL
PL 3mm GAL

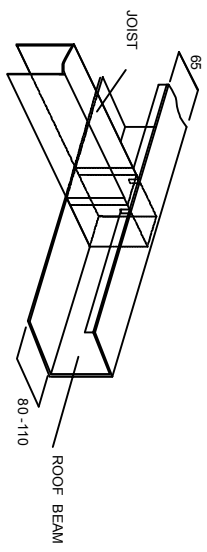


MATERIAL
PL 3mm GAL

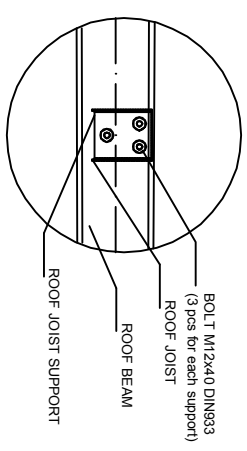


MATERIAL
PL 2mm GAL

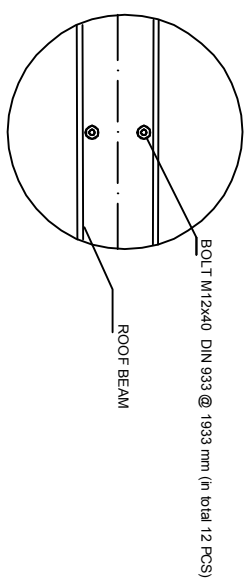
DETAIL H



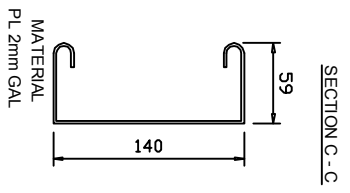
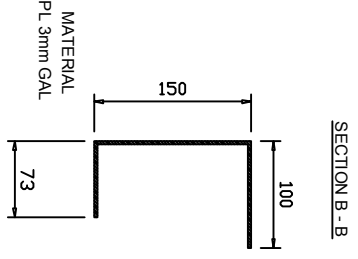
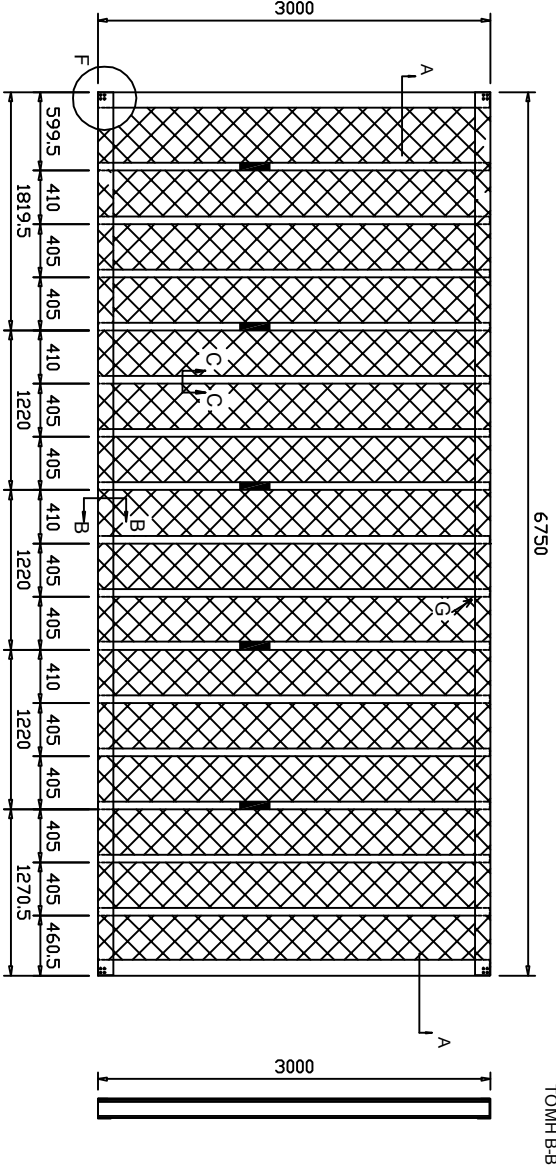
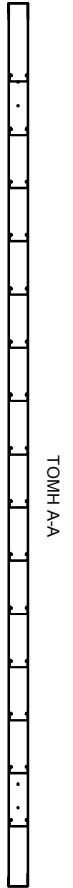
DETAIL I
JOIST TO ROOF BEAM JOINTING



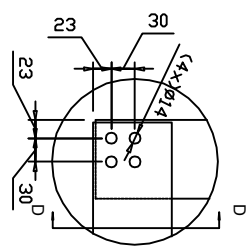
DETAIL J
BEAM TO BEAM JOINTING



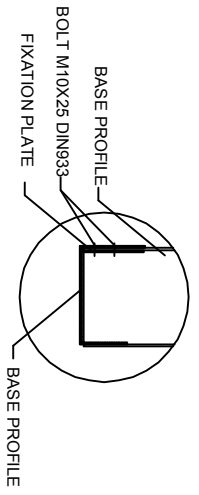
NOTE:
STEEL GRADE OF ALL ROOF FRAME SECTIONS : S350 GD + Z (EN 10047)



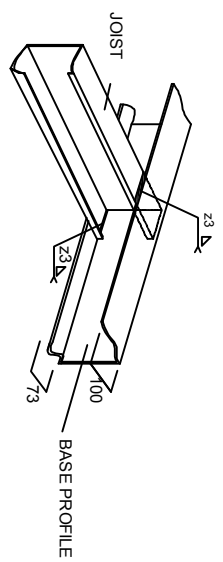
DETAIL E



SECTION D - D

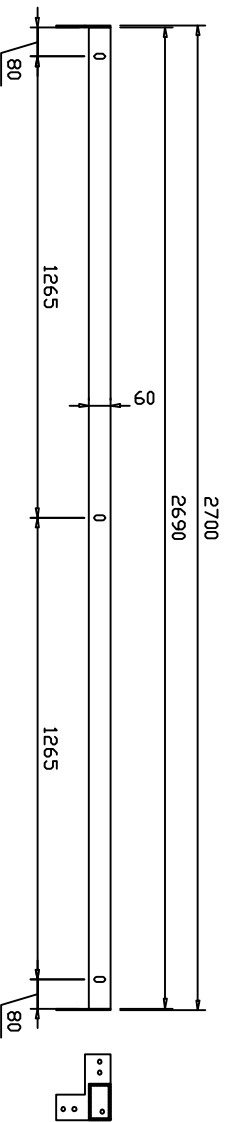
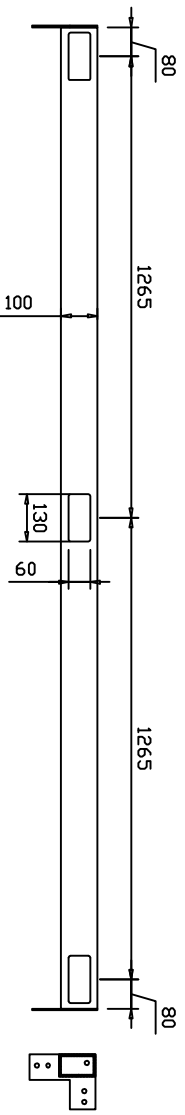
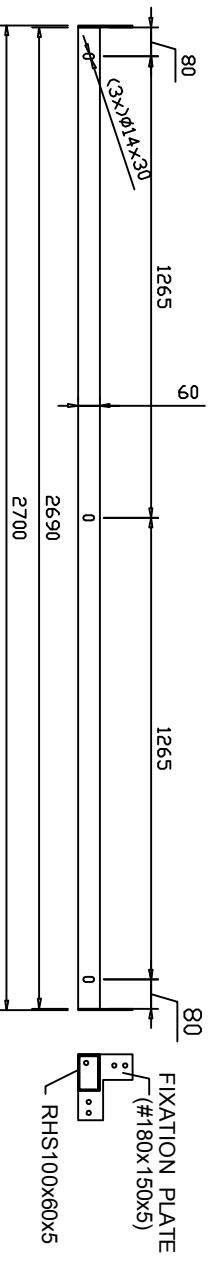


DETAIL G



NOTES:
1. THE COMPLETE BASE FRAMEWORK IS A WELDED CONSTRUCTION

TYPE A



NOTES:

1. SLOTS ARE FORMED ONLY ON THE SHOWN SIDE OF THE POST
2. FIXATION PLATE THICKNESS IS 5mm
3. THE FIXATION PLATES ARE WELDED ON THE POST
4. STEEL GRADE S-235